

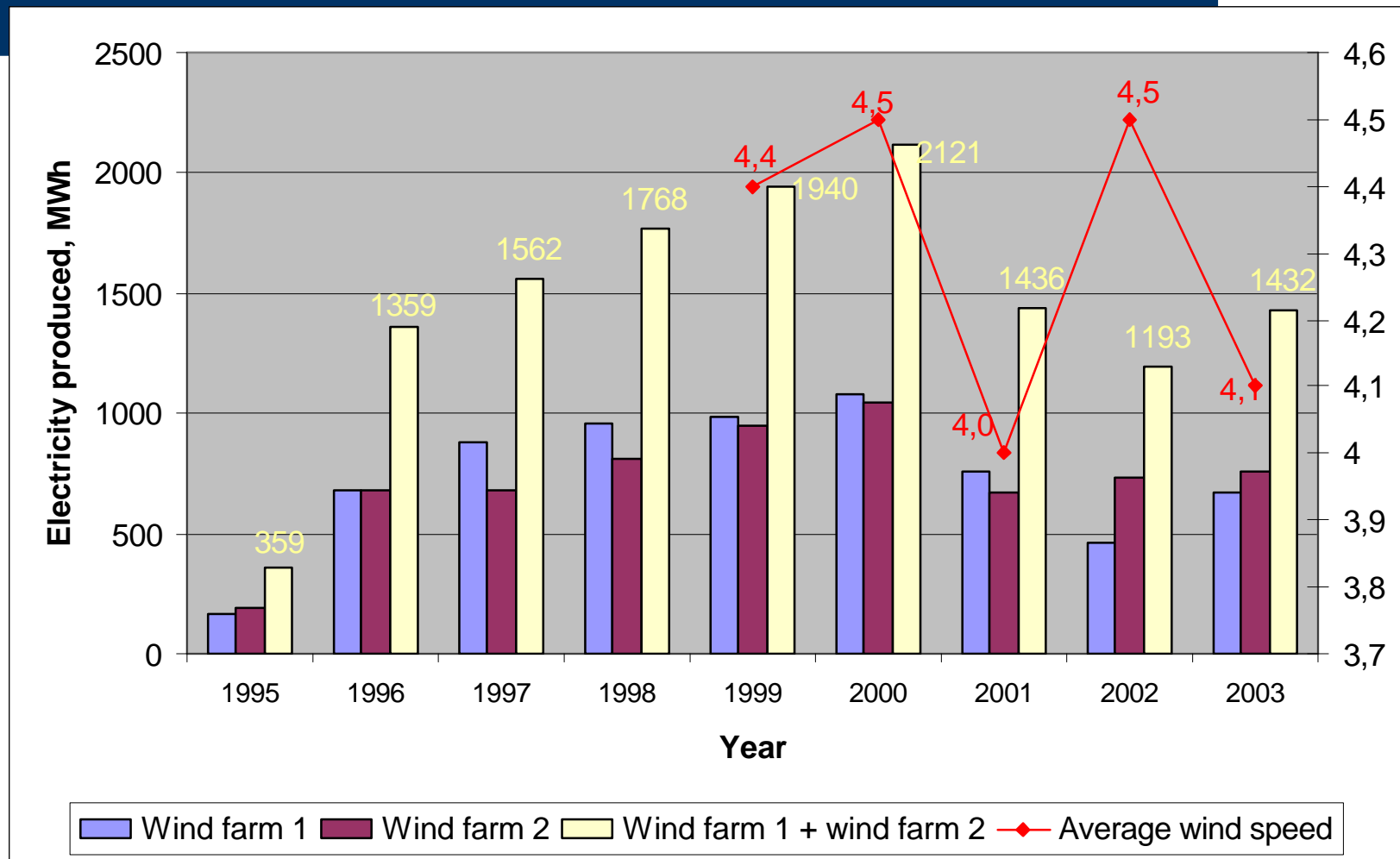
**Successful use of wind energy in  
Latvia.  
Experience and problems of wind  
farm in Ainazi**

Arnolds Laumanis  
Latvenergo

## Basic information about wind farm in Ainazi

- Is situated in the North of Latvia close to the sea coast and Estonian border
- Project was supported by German government (70%)
- In 1995 two wind generators have been installed with total capacity 1200 kW
- In 1998 both wind plants produced 1,8 million kWh (0.025% of total electricity produced in Latvia)

# Electricity produced in Ainazi wind farm



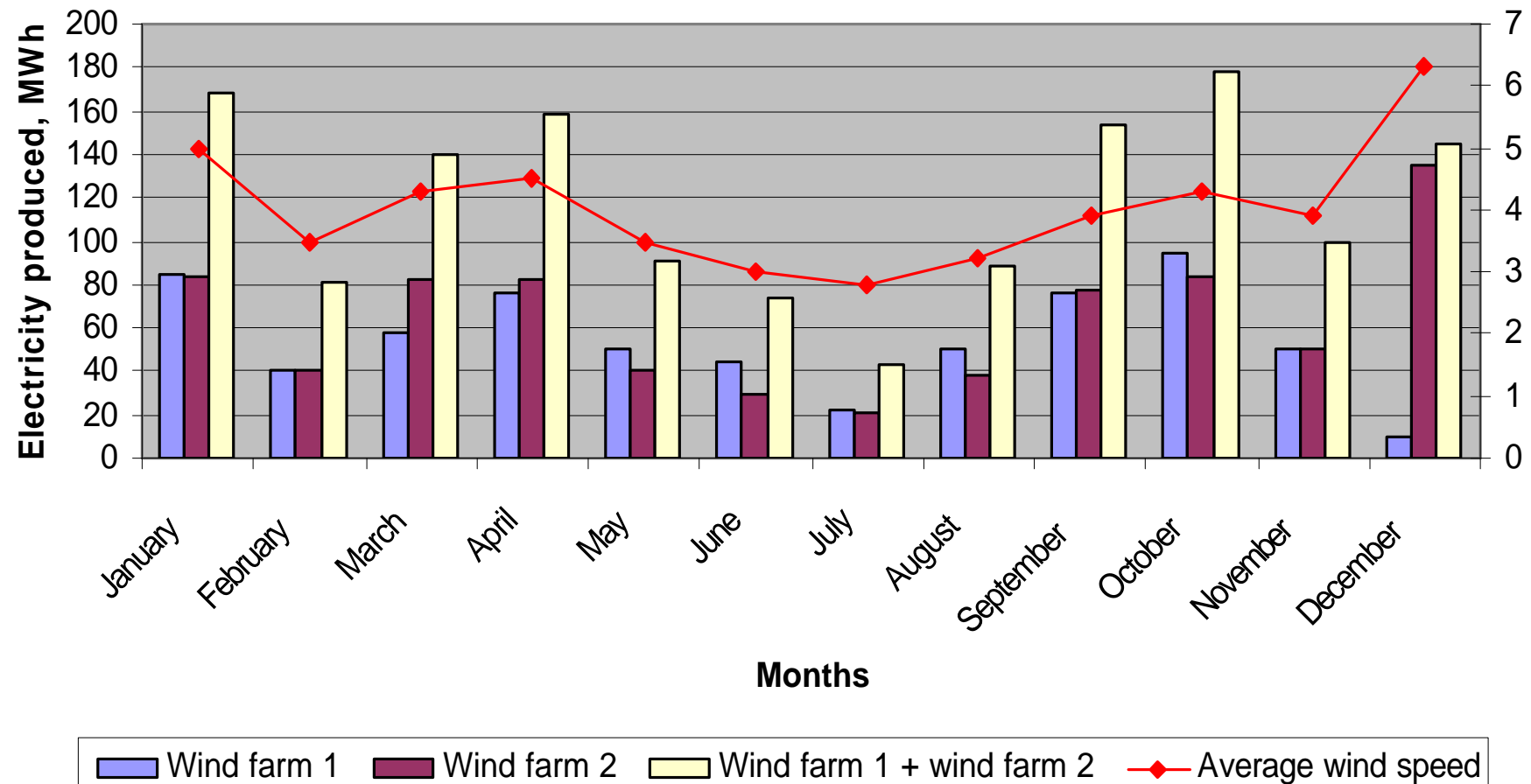
## Good conditions for wind energy

- In Latvia for wind farms and small scale HPP built until 1<sup>st</sup> of January 2003 there are good conditions for surplus electricity (until 01.01.04. – 0.093 Euro/kWh)

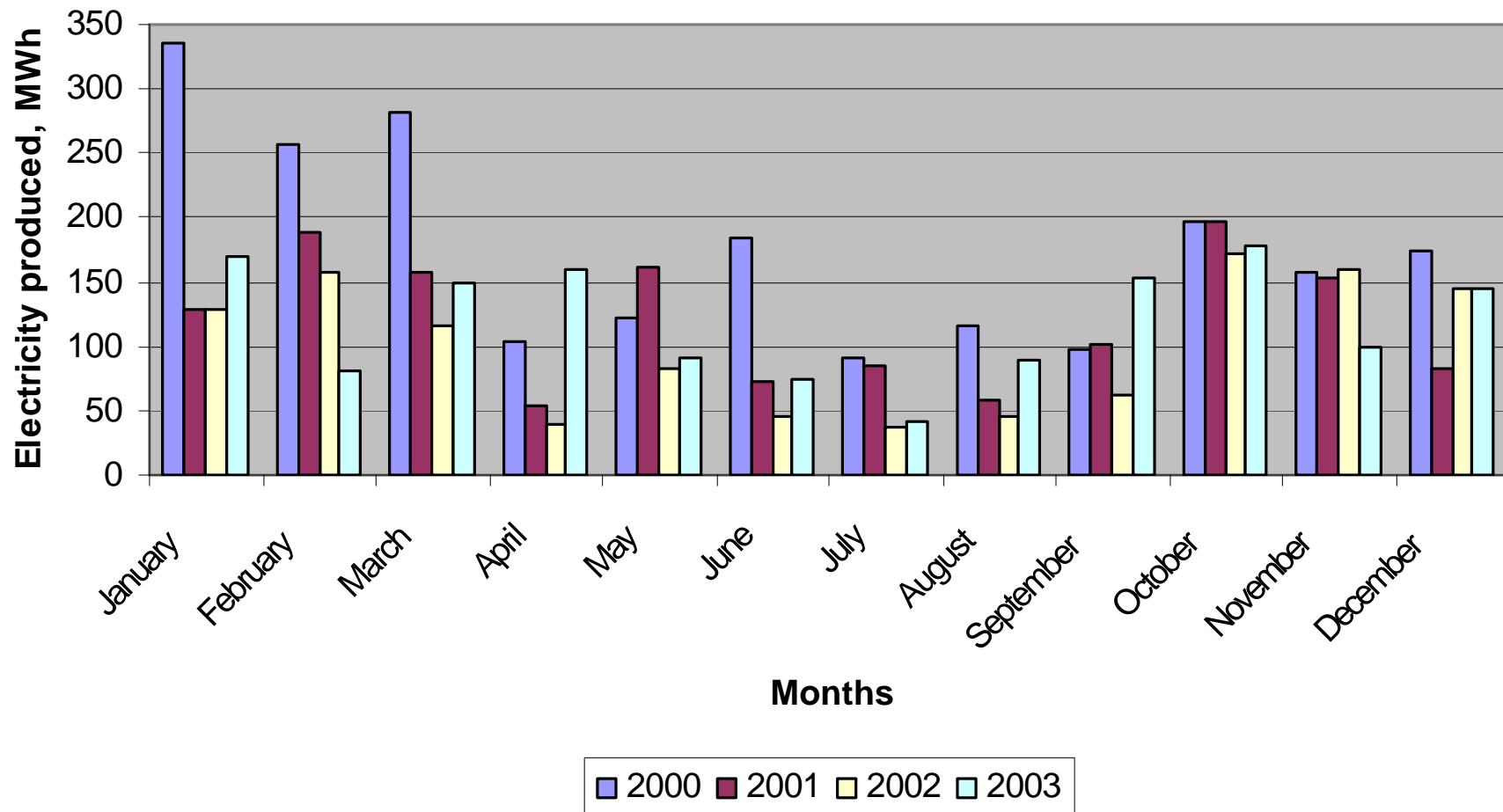
# Reasons for unsuccessful beginning of operation of Ainazi wind farm

- In 1996 meteorological conditions were not sufficient for wind energy – 1,2 m/s below the average wind speed
- Staff working at wind farm was not enough educated about this technology
- Different technical problems appear

# Electricity produced during 2003



# Electricity produced during in 12 months during 2000 and 2003



## Future of wind energy

- Proportion of wind energy until 2020 should reach 3.1% of total electricity produced in Latvia