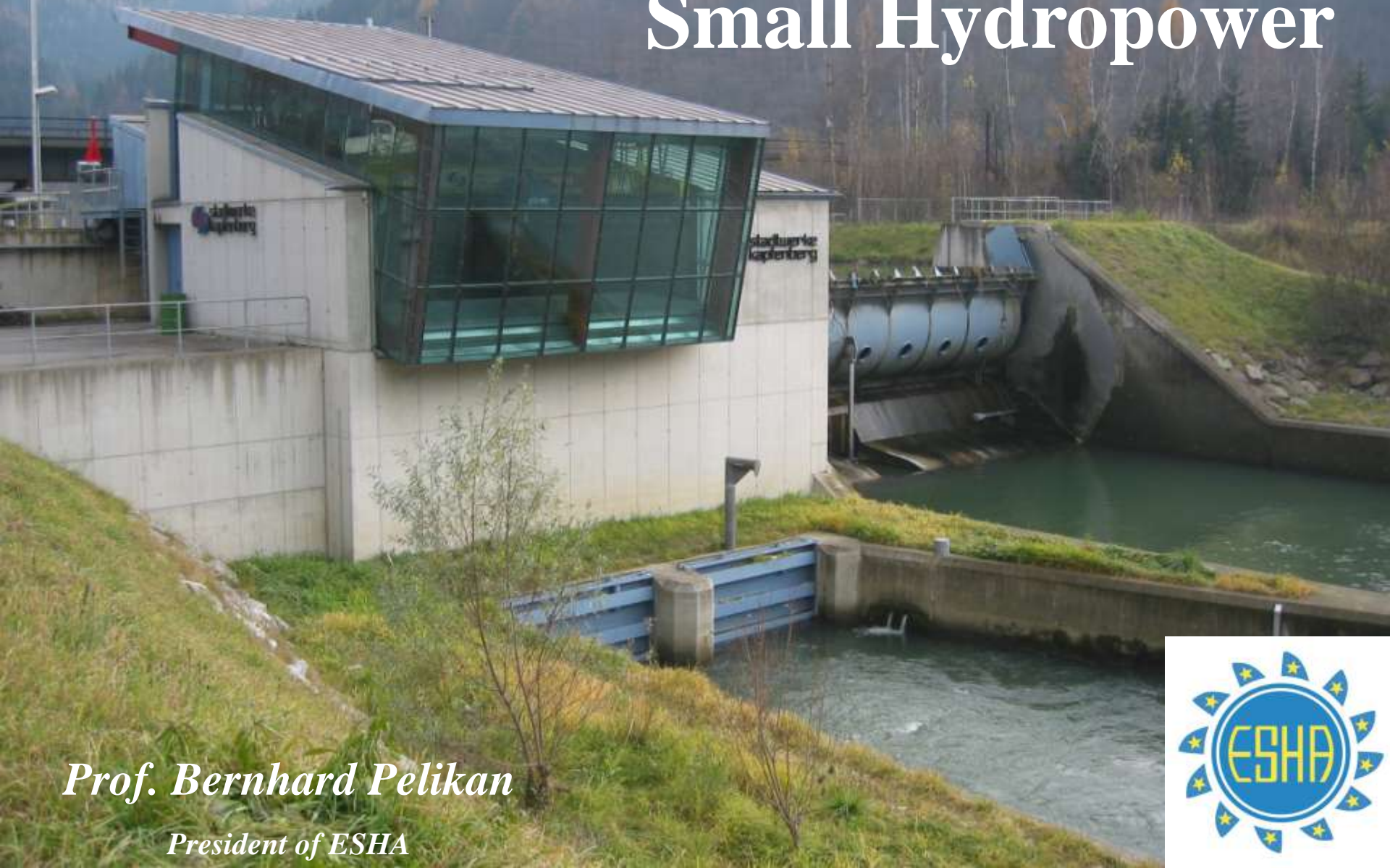


Renewable energy policy workshop
Brussels, 30th January 2008

Small Hydropower



Prof. Bernhard Pelikan

President of ESHA

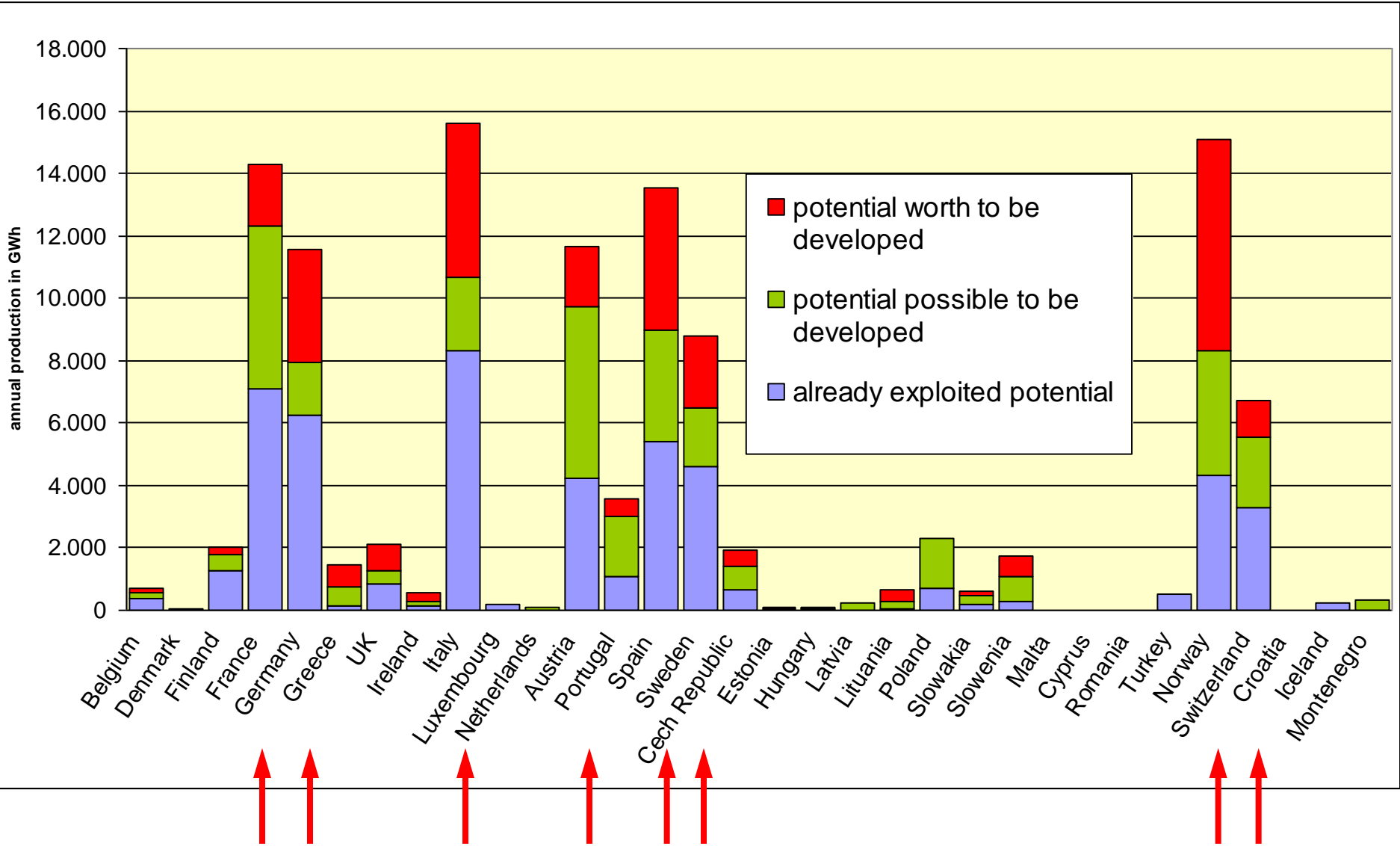


ESHA



- Non-profit Organisation, founded 1989
- Headquarters in Renewable Energy House in Brussels
- Members in most EU countries and worldwide
 - National SHP associations
 - SHP industry (manufacturers, etc.)
 - Scientific community
 - Individual members
- ESHA is founding member of EREC- the European Renewable Energy Council

SHP potential in Europe



SHP potential in Europe



		MW	GWh/a	
Potential	already exploited	12.587	50.279	
	potential worth to be developed	modernisation	17% 2.921	10.952
		new plants	83% 14.268	55.525
	potential possible to be developed	modernisation	1.382	5.636
		new plants	6.524	29.127
	total potential worth to be developed	29.776	116.756	
	already exploited share	42%		
	total potential possible to be exploited	20.493	85.042	
	already exploited share	61%		

SHP position towards RE directive



- There is huge SHP potential in Europe to be exploited
- The RE directive will support the exploitation politically
- It states clear obligations concerning the authorisation (Simplification, harmonisation, fast track, cost relation, transparency)
- The directive supports expressively the RE access to the grid
- There is no comment on how to calculate the value of RE
- The following points will decide upon the final result:
 - ✓ Implementation into national law
 - ✓ National action plans
 - ✓ Control and reporting
 - ✓ Consequences and penalties



Normalisation rule for accounting for electricity generated from hydropower

$$Q_{N(norm)} = C_N * \left[\sum_{i=N-14}^N \frac{Q_i}{C_i} \right] / 15$$

There are two features typically for large hydro:

- high degree of exploitation
- existence of storage plants

Putting small hydro and large hydro into one pot will significantly underestimate the contribution of SHP. A separate calculation by a limit of 10 MW will solve the problem.



Hidroenergija 2008 "On the Crossroads"



Bled, Slovenia, 11-13 June 2008

ESHA - European Small Hydropower Association

T: +32 2 546 1945

Renewable Energy House

E: info@esha.be

63-65 rue D'Arlon, B-1000 Brussels, Belgium

I: www.esha.be